

# EXPLORING CLOUD PERCEPTIONS

## MAXIMIZE YOUR CLOUD INVESTMENTS

Moving to cloud isn't a matter of why, but when and how. Cloud promises speed, agility, and cost savings. But while adopting cloud is common protocol, deciding which model is best and realizing its full value requires evaluating:

### Data security and regulatory compliance

#### Risks



#### Costs

Egress costs, TCO analysis, and consumption models

### Data volume and velocity requirements

#### Performance



#### Control

Access for users to the type of data they need, when they need it

## THE RAPID SURGE IN ENTERPRISE CLOUD ADOPTION

"IT spending shifting to cloud will accelerate in the aftermath of the COVID-19 crisis, with cloud projected to make up 14.2% of the total global enterprise IT spending market in 2024, up from 9.1% in 2020."<sup>1</sup>

"By 2023, 40% of all enterprise workloads will be deployed in cloud infrastructure and platform services, up from 20% in 2020."<sup>2</sup>

"The strongest growth in cloud revenues will come in the as-a-service category and by 2024 account for more than 60% of all cloud revenues worldwide, a forecast to deliver a five-year CAGR of 21%."<sup>3</sup>

## LEARN THE ROPES WITH PEER INSIGHTS AND ACTIONABLE BEST PRACTICES



A recent primary research study commissioned by HPE<sup>4</sup> brings cloud perceptions to the forefront and generates fascinating insights from your peers. This study was conducted to understand cloud perceptions and/or misconceptions, as well as identify relevant IT infrastructure trends and behaviors in the marketplace.

## WHAT ARE YOUR PEERS SAYING?<sup>5</sup>

**Through overprovisioning cloud and underutilizing on-prem infrastructure, stakeholders indicate on average 16% of their IT budgets (\$22M) are spent on misaligned infrastructure.**

You can't manage what you can't see. One-fifth of public cloud users and one-third of private cloud users acknowledged a deficiency to assess where waste might be. Gain true line-of-sight across the environment.

**Even though innovation is top of mind, more than half of the respondents are still spending 60% or more of their IT budgets on maintenance.**

As a result of COVID-19, cloud migration has increased by an average of 62% due to the quick transition to a remote workforce. However, maintenance still surpasses innovation spend which needs to change in these times of balancing market turmoil and transformation.

**Almost 40% of decision-makers believe their organization runs critical workloads in the wrong location.**

There's a significant disconnect between where workloads reside vs. where they could be optimized. Research shows strong movements to a hybrid cloud approach.

**95% of respondents say they have plans to bring at least some of their workloads back on-premises—primarily due to security and control.**

Cloud repatriation is implemented for three main reasons—perceptions of overvalued cost savings, caution against cyberattacks, and the need for more application control.

**Due to perceptions of mitigating risks, about two-thirds of organizations are using less than 60% of their infrastructure on any given day, resulting in higher costs.**

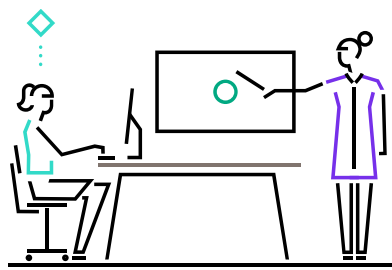
Most organizations simply aren't utilizing majority of their infrastructure, resulting in higher-than-expected costs. These preventable costs could be reinvested in innovative revenue-generating opportunities.

**Due to data egress challenges, 70% of organizations keep their data on-premises in a colocation facility or private cloud.**

76% of respondents acknowledged that data egress is one of their biggest anxieties. The desire to monitor data traffic volume and sensitivity risks for malicious activities continues to lead organizations to on-premises solutions.

## WHAT'S THE RIGHT CLOUD MIX FOR YOU?

When it comes to cloud, one size does not fit all. Cloud is a journey which differs for every organization. The good news is that there are more options and variants than ever. Strike the best balance for your organization and find a strategic partner with the expertise that can grow with you and enable you to get the most from your cloud, data, and applications—wherever they live.



### As a service is on the rise

In 2021, 75% of enterprises will recognize the benefits of as-a-service consumption, driving a 3x increase in demand for on-premises infrastructure delivered via flexible/as-a-service solutions.<sup>6</sup>

Check out this [video](#) to understand your options for a modern cloud experience.

## LEARN MORE

### HPE GreenLake Cloud Services

Transform the way you do business with HPE GreenLake. Gain one experience and one operating model across your distributed clouds, for apps and data at the edge, in colocations, and in your data center.

### HPE Pointnext Services

Design your digital transformation with expert IT consulting from HPE Pointnext Services.

### HPE Multi-cloud Storage

Get intelligent storage that's built for cloud to work seamlessly with public cloud and your data center, allowing data to move without constraints.

### HPE Hybrid Cloud Solutions

Navigate cloud complexities and implement a cloud experience for all your workloads with cloud services, cloud software, and infrastructure solutions—delivered as a service.

### HPE Private Cloud Solutions

Drive the speed and efficiency your business demands through software-driven infrastructure with leading partner cloud stacks. Deliver IT services with the ease, speed, scale, and economics of private cloud.

Make the right purchase decision. Contact our presales specialists.



Chat



Email



Call

Get updates

<sup>1</sup> Gartner Press Release, Gartner Forecasts Worldwide Public Cloud End-User Spending to Grow 18% in 2021, November 17, 2020

<sup>2</sup> Predicts 2021: Cloud and Edge Infrastructure, Gartner, December 2020

<sup>3</sup> Cloud Adoption and Opportunities Will Continue to Expand Leading to a \$1 Trillion Market in 2024, IDC, Oct 15, 2020

<sup>4</sup> HPE GreenLake Challenger Research Report, HPE commissioned report, Emerald Research Group, November 2020

<sup>5</sup> IDC FutureScape: Worldwide Future of Digital Infrastructure 2021 Predictions, Oct 2020, doc # US46470820

© Copyright 2021 Hewlett Packard Enterprise Development LP. The information contained herein is subject to change without notice. The only warranties for Hewlett Packard Enterprise products and services are set forth in the express warranty statements accompanying such products and services. Nothing herein should be construed as constituting an additional warranty. Hewlett Packard Enterprise shall not be liable for technical or editorial errors or omissions contained herein.

a50003633ENW, March 2021